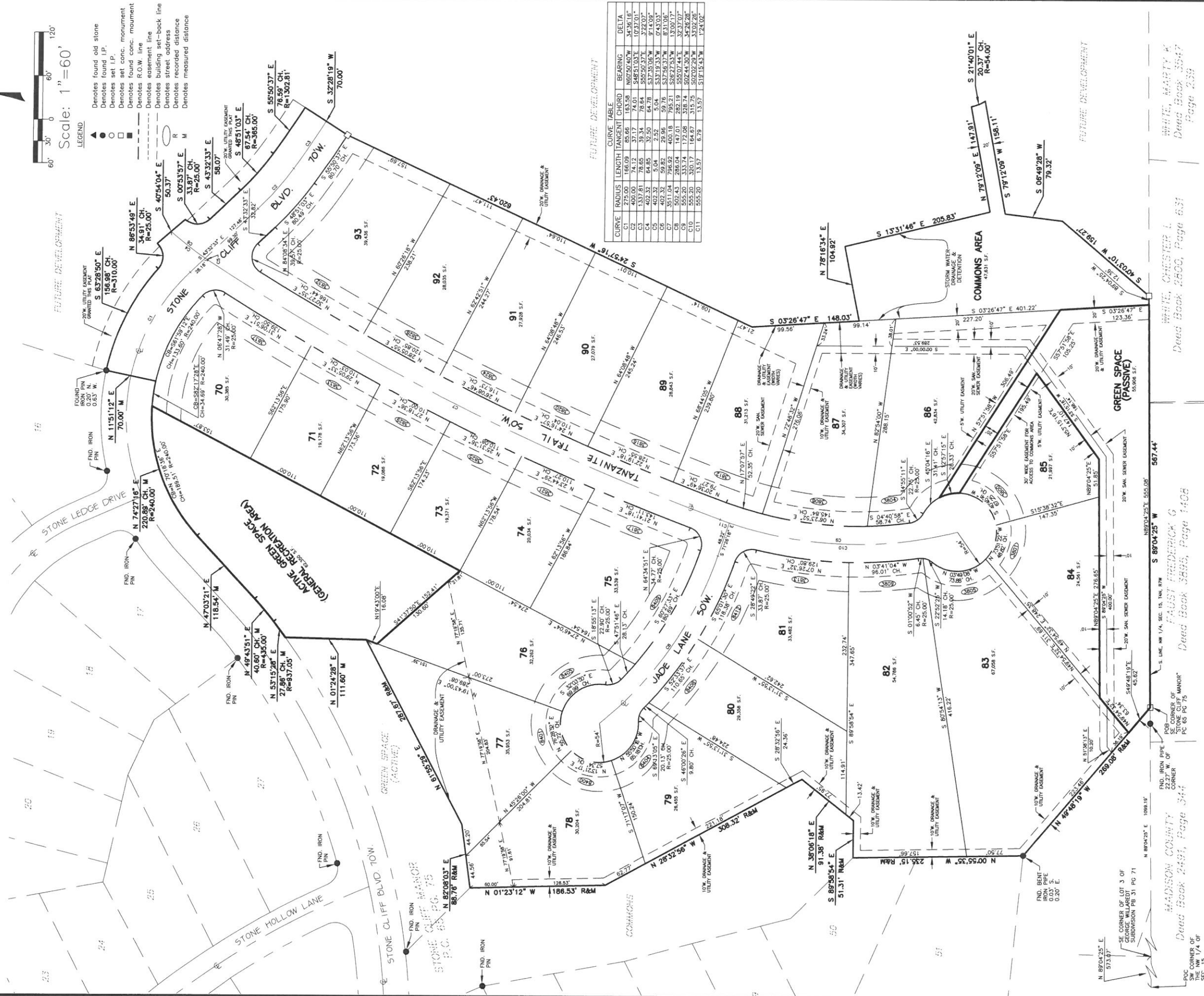


# FIRST ADDITION TO STONE CLIFF MANOR

A SUBDIVISION OF PART OF THE NORTHWEST QUARTER OF SECTION 15, TOWNSHIP 4 NORTH, RANGE 7 WEST OF THE THIRD PRINCIPAL MERIDIAN, MADISON COUNTY, ILLINOIS



The area embraced on this plat is part of Madison County, Illinois Parcel No's:  
 10-1-16-15-00-000-009  
 10-1-16-15-00-000-002.002  
 10-1-16-15-00-000-002.004  
 10-1-16-15-00-000-002.005

AREA IN LOTS=17.39 ACRES  
 AREA IN COMMONS AREA=1.09 ACRES  
 AREA IN ACTIVE GREEN SPACE=1.43 ACRES  
 AREA IN PASSIVE GREEN SPACE=1.28 ACRES  
 AREA IN R.O.W.=2.68 ACRES  
 AREA IN SUBDIVISION=23.88 ACRES

Owner/Developer:  
 Retail Place, LLC  
 7700 Stonebridge Golf Drive  
 Maryville, IL 62062  
 618-346-7878

**Sherbut-Carson-Claxton, LLC**  
 #4 Meadow Heights Professional Park  
 Collinsville, Illinois 62234  
 Phone: 618-345-5454  
 Fax: 618-345-3017

DRAWING: **FINAL PLAT**

**FIRST ADDITION TO STONE CLIFF MANOR**

PROJECT NO. 3013  
 SHEET NUMBER :

SHEET 1 OF 2

WHITE, CHESTER L.  
 Deed Book 2800, Page 637

WHITE, CHESTER L.  
 Deed Book 2800, Page 637

FAUST FREDERICK G  
 Deed Book 3695, Page 1408

MADISON COUNTY  
 Deed Book 2451, Page 344

POB SE CORNER OF LOT 3 OF SUBDIVISION PG 31 PG 71  
 N 82°04'28" E 109.15'  
 N 82°04'28" E 109.15'  
 S 82°04'28" E 109.15'  
 S 82°04'28" E 109.15'