

THIRD ADDITION TO REMINGTON PLACE

BEING A RESUBDIVISION OF OUTLOT "E" AND PART OF OUTLOT "D" OF "SECOND ADDITION TO REMINGTON PLACE" IN PART OF THE NORTHEAST QUARTER OF SECTION 12, TOWNSHIP 3 NORTH, RANGE 8 WEST OF THE THIRD PRINCIPAL MERIDIAN, MADISON COUNTY, ILLINOIS.

#2017R212104

Madison County
 State of Illinois
 30 State Records, do hereby certify that this plat contains a true and correct copy of the original record as filed in the office of the County Clerk of Madison County, Illinois, on this 12th day of July, 2017, at 11:14 a.m. and that the same is a true and correct copy of the original record as filed in the office of the County Clerk of Madison County, Illinois, on this 12th day of July, 2017, at 11:14 a.m.

Angela Myers
 County Clerk
 Madison County, Illinois



- LEGEND:**
- Denotes found old stone
 - Denotes found I.P.
 - Denotes set conc. monument
 - Denotes found conc. monument
 - Denotes R.O.W. line
 - - - Denotes easement line
 - · - · - Denotes building set-back line
 - · - · - Denotes gas pipeline easement line
 - Denotes center line
 - Denotes street address

NOTES:

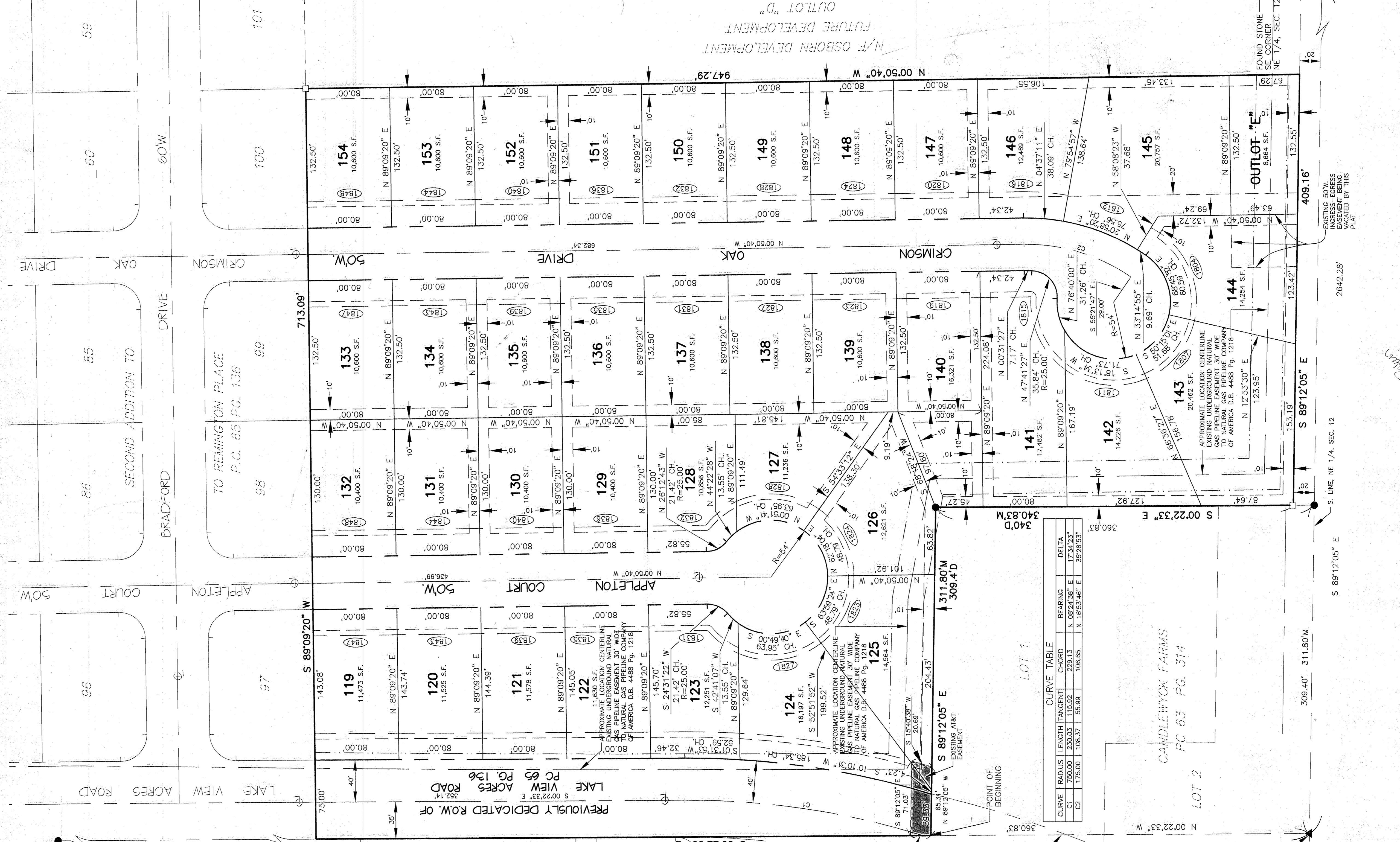
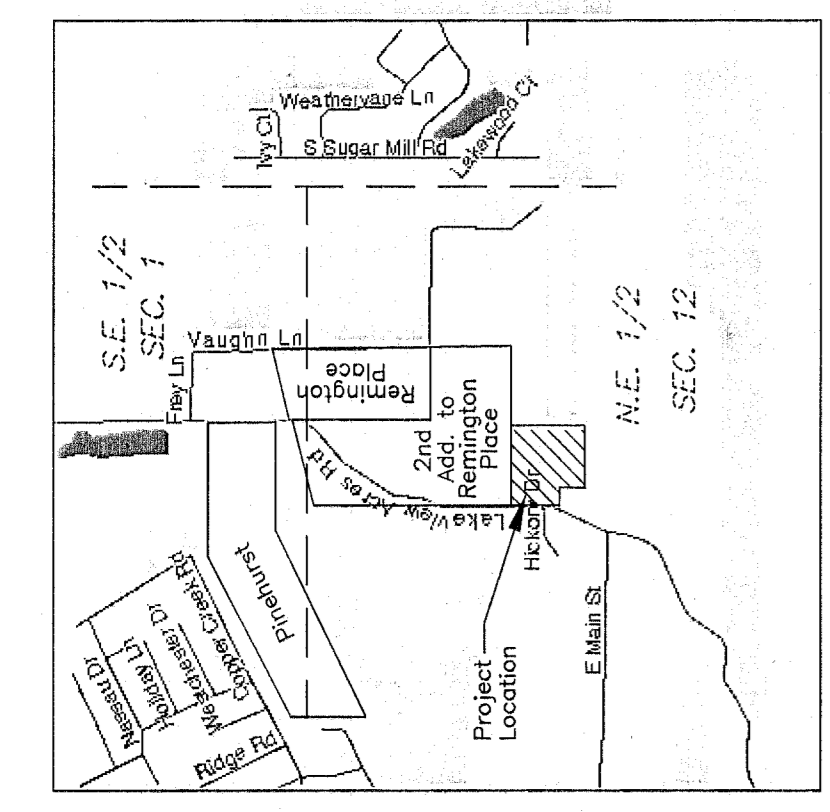
1. All bearings shown hereon are assumed.
2. All dimensions along curves are chord dimensions.
3. 5/8"x30" iron pins (rebar) set at all lot corners with additional crosses cut in the concrete curb & gutter at an offset from all front lot corners, P.C.'s, P.T.'s and E.O.R.'s.
4. Radii at all street intersections turn outs are 25' to right of way.
5. All easements shown hereon are 20' wide unless otherwise noted.
6. Building set back lines are 25' behind right of way unless otherwise noted.

Note:
 Lots 119 through 124 shall not be accessed from Lake View Acres Road

13--1--21--12--00--000--004

N/F RONALD T. POLETTI
 REVOCABLE LIVING TRUST
 13--1--21--12--00--000--002

ROBERT W. & KESSIE E. TRATMAN
 13--1--21--12--00--000--003



AREA IN LOTS=9.99 ACRES
 AREA IN OUTLOT=0.33 ACRES
 AREA IN STREETS=2.66 ACRES
 AREA IN SUBDIVISION=12.98 ACRES

Land Surveyor/Engineer
 Sherbut-Carson-Claxton, LLC
 #4 Meadow Heights Professional Park
 Collinsville, IL 62234
 618-345-5664

Owner/Developer
 Remington Place LLC
 #4 Meadow Heights Professional Park
 Collinsville, IL 62234
 618-345-7878

DRAWING: SUBDIVISION PLAT

THIRD ADDITION TO REMINGTON PLACE

PROJECT NO. 2102-3
 SHEET NUMBER: 1 OF 2

DATE: 12/16/16
 DRAWN: K.M.C.
 CHECK:

REVISIONS
 DATE: 2/20/17
 REMARKS: REV#5 PER VILLAGE COMMENTS

Sherbut-Carson-Claxton, LLC
 #4 Meadow Heights Professional Park
 Collinsville, Illinois 62234
 Phone: 618-345-5454
 Fax: 618-345-3017