

PROJECT: 01-27-2010-01

SCHOOL DISTRICTS:
 O'FALLON DISTRICT 30
 O'FALLON DISTRICT 203
 CROSS AREA PHASE 1 - 13.89 ACRES
 ROW AREA - 4.19 ACRES
 ROW AREA TO BE RELOCATED - 0.42 ACRES
 NET AREA - 31.08 ACRES
 ZONING DISTRICT CLASSIFICATION: SR-18, SR2

FINAL PLAN OF CHESAPEAKE JUNCTION-PHASE 1

PART OF LOTS 4 AND 5 OF SECTION 23
 AND PART OF THE NORTH HALF OF SECTION 26,
 TOWNSHIP 2 NORTH RANGE 8 WEST
 OF THE THIRD PRINCIPAL MERIDIAN
 ST. CLAIR COUNTY, ILLINOIS

ROUQUET WALTER TRUSTEES
 BR. 305/26/PC 1744

LAND SURVEYOR/ENGINEER
 THOUVENOT, WADE & MORGENTHAU, INC.
 4940 OLD COLUMBIAN RD
 SWANSEA, ILLINOIS 62226
 (618) 624-4488

DRAWN/REVISIONS
 CHESAPEAKE JUNCTION, LLC
 100 RICHMOND CENTER
 COLLINGSVILLE, ILLINOIS 62234
 (618) 624-4488

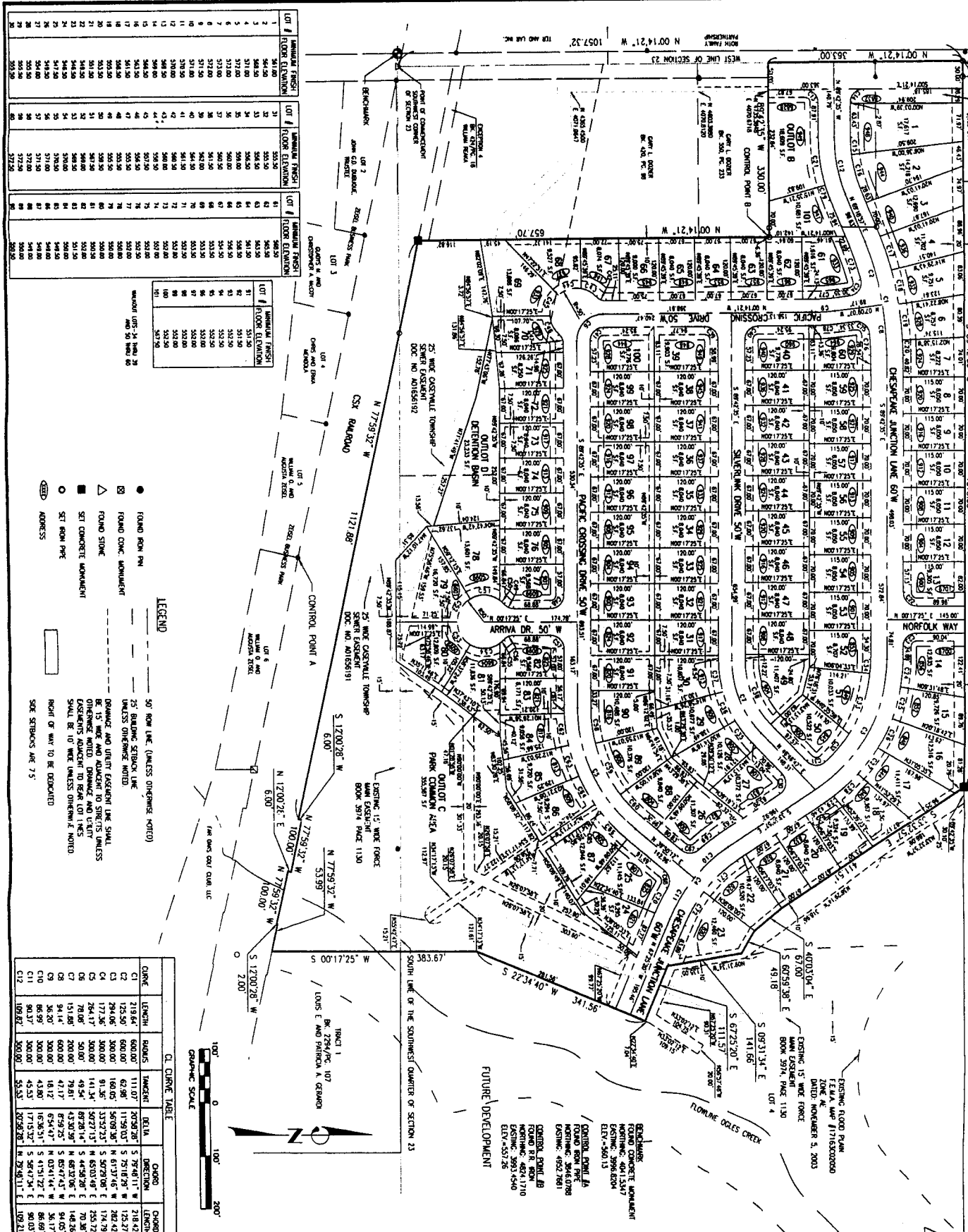
THOUVENOT, WADE & MORGENTHAU, INC.
 ENGINEERS & SURVEYORS & PLANNERS

TWM

4940 OLD COLUMBIAN RD
 SWANSEA, ILLINOIS 62226
 TEL (618) 624-4488
 FAX (618) 624-6688
 corp@twm-inc.com

118 EAST THIRD STREET
 WATERLOO, ILLINOIS 62298
 TEL (618) 939-5050
 FAX (618) 939-3838
 waterloo@twm-inc.com

ST. LOUIS OFFICE
 1001 CHAMPE ROADS, SUITE 200
 ST. LOUIS, MISSOURI 63146
 TEL (314) 236-5052
 FAX (314) 872-2194
 stlouis@twm-inc.com



LOT #	AREA (SQ. FT.)	AREA (AC.)	PERCENTAGE OF TOTAL
1	1,234,567	28.2	90.8
2	123,456	2.8	9.2
3	123,456	2.8	9.2
4	123,456	2.8	9.2
5	123,456	2.8	9.2
6	123,456	2.8	9.2
7	123,456	2.8	9.2
8	123,456	2.8	9.2
9	123,456	2.8	9.2
10	123,456	2.8	9.2
11	123,456	2.8	9.2
12	123,456	2.8	9.2
13	123,456	2.8	9.2
14	123,456	2.8	9.2
15	123,456	2.8	9.2
16	123,456	2.8	9.2
17	123,456	2.8	9.2
18	123,456	2.8	9.2
19	123,456	2.8	9.2
20	123,456	2.8	9.2
21	123,456	2.8	9.2
22	123,456	2.8	9.2
23	123,456	2.8	9.2
24	123,456	2.8	9.2
25	123,456	2.8	9.2
26	123,456	2.8	9.2
27	123,456	2.8	9.2
28	123,456	2.8	9.2
29	123,456	2.8	9.2
30	123,456	2.8	9.2
31	123,456	2.8	9.2
32	123,456	2.8	9.2
33	123,456	2.8	9.2
34	123,456	2.8	9.2
35	123,456	2.8	9.2
36	123,456	2.8	9.2
37	123,456	2.8	9.2
38	123,456	2.8	9.2
39	123,456	2.8	9.2
40	123,456	2.8	9.2
41	123,456	2.8	9.2
42	123,456	2.8	9.2
43	123,456	2.8	9.2
44	123,456	2.8	9.2
45	123,456	2.8	9.2
46	123,456	2.8	9.2
47	123,456	2.8	9.2
48	123,456	2.8	9.2
49	123,456	2.8	9.2
50	123,456	2.8	9.2
51	123,456	2.8	9.2
52	123,456	2.8	9.2
53	123,456	2.8	9.2
54	123,456	2.8	9.2
55	123,456	2.8	9.2
56	123,456	2.8	9.2
57	123,456	2.8	9.2
58	123,456	2.8	9.2
59	123,456	2.8	9.2
60	123,456	2.8	9.2
61	123,456	2.8	9.2
62	123,456	2.8	9.2
63	123,456	2.8	9.2
64	123,456	2.8	9.2
65	123,456	2.8	9.2
66	123,456	2.8	9.2
67	123,456	2.8	9.2
68	123,456	2.8	9.2
69	123,456	2.8	9.2
70	123,456	2.8	9.2
71	123,456	2.8	9.2
72	123,456	2.8	9.2
73	123,456	2.8	9.2
74	123,456	2.8	9.2
75	123,456	2.8	9.2
76	123,456	2.8	9.2
77	123,456	2.8	9.2
78	123,456	2.8	9.2
79	123,456	2.8	9.2
80	123,456	2.8	9.2
81	123,456	2.8	9.2
82	123,456	2.8	9.2
83	123,456	2.8	9.2
84	123,456	2.8	9.2
85	123,456	2.8	9.2
86	123,456	2.8	9.2
87	123,456	2.8	9.2
88	123,456	2.8	9.2
89	123,456	2.8	9.2
90	123,456	2.8	9.2
91	123,456	2.8	9.2
92	123,456	2.8	9.2
93	123,456	2.8	9.2
94	123,456	2.8	9.2
95	123,456	2.8	9.2
96	123,456	2.8	9.2
97	123,456	2.8	9.2
98	123,456	2.8	9.2
99	123,456	2.8	9.2
100	123,456	2.8	9.2

FINAL PLAN

PROJECT: CHESAPEAKE JUNCTION - PHASE 1
 CITY OF O'FALLON
 ST. CLAIR COUNTY, ILLINOIS

DATE: 11/14/2010

SCALE: AS SHOWN

REVISIONS:

NO.	DATE	DESCRIPTION
1	11/14/2010	ISSUED FOR PERMIT

PROJECT: 001000020
 SHEET: 1
 OF 2 SHEETS

DESIGNED BY: [Name]
 CHECKED BY: [Name]
 DRAWN BY: [Name]

ST. LOUIS OFFICE: 1001 CHAMPE ROADS, SUITE 200, ST. LOUIS, MISSOURI 63146
 TEL: (314) 236-5052
 FAX: (314) 872-2194
 stlouis@twm-inc.com