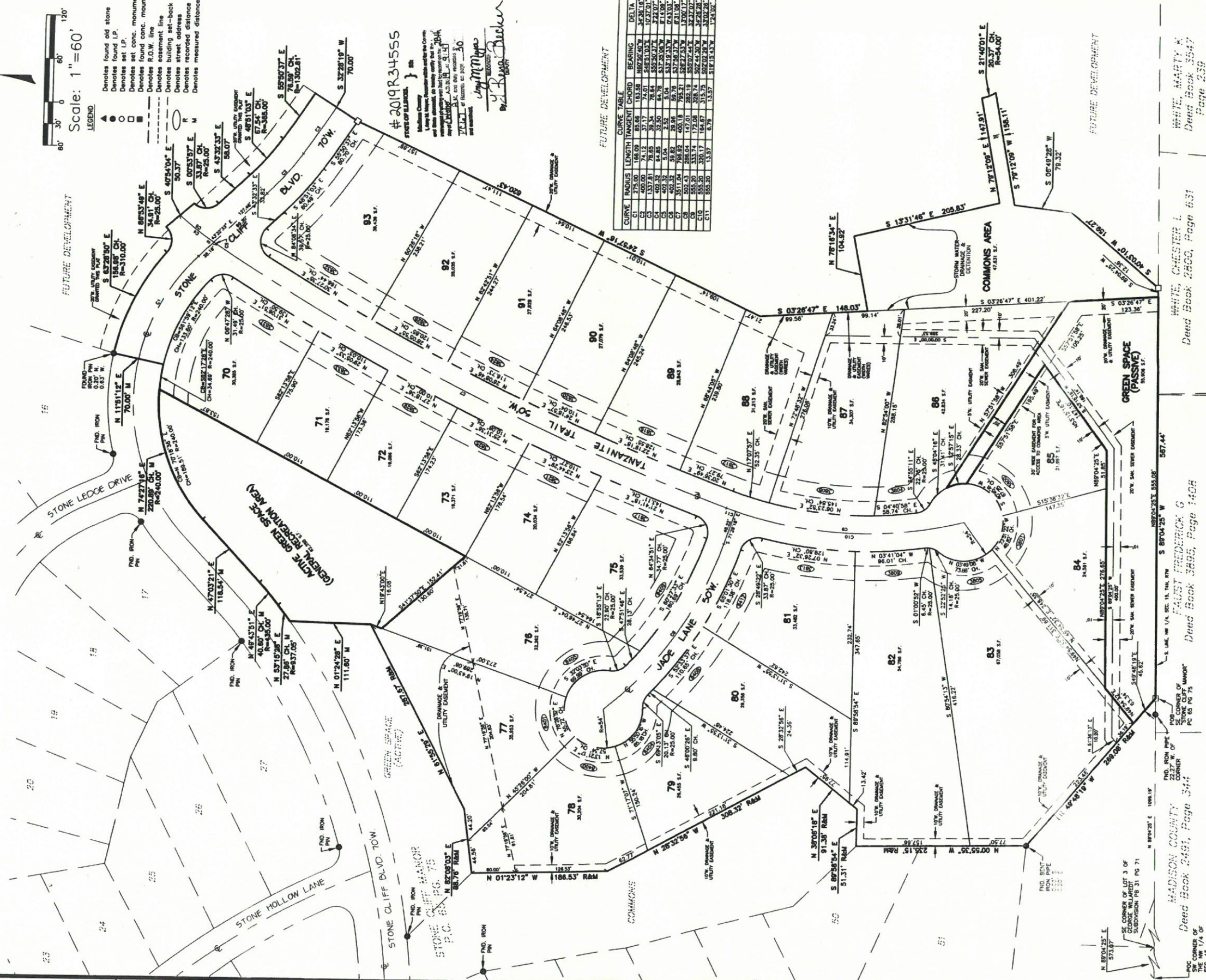


FIRST ADDITION TO STONE CLIFF MANOR

A SUBDIVISION OF PART OF THE NORTHWEST QUARTER OF SECTION 15, TOWNSHIP 4 NORTH, RANGE 7 WEST OF THE THIRD PRINCIPAL MERIDIAN, MADISON COUNTY, ILLINOIS



LEGEND
 Denotes found old stone
 Denotes found I.P.
 Denotes set I.P.
 Denotes set conc. monument
 Denotes found conc. monument
 Denotes R.O.W. line
 Denotes easement line
 Denotes building set-back line
 Denotes street address
 Denotes recorded distance
 Denotes measured distance

#2019R34555
 STATE OF ILLINOIS
 Madison County
 Clerk
 I hereby certify that the foregoing is a true and correct copy of the original as recorded in my office.
 WITNESSED my hand and the seal of said county this 15th day of May, 2019.
 J. J. [Signature]
 Clerk

FUTURE DEVELOPMENT

CURVE	RADIUS	LENGTH	TANGENT	CHORD	BEARING	DELTA
C1	400.00	14.12	87.68	18.38	N86°26'00"E	24°38'18"
C2	1337.81	78.85	38.34	78.64	S85°51'33"E	10°27'01"
C3	402.32	64.85	32.50	64.78	S87°19'33"E	24°10'00"
C4	402.32	64.85	32.50	64.78	S87°19'33"E	24°10'00"
C5	402.32	64.85	32.50	64.78	S87°19'33"E	24°10'00"
C6	3511.04	708.92	400.18	282.19	S87°19'33"E	3°00'17"
C7	502.43	208.04	147.01	282.19	S87°19'33"E	3°00'17"
C8	552.90	333.74	179.08	338.74	S87°19'33"E	3°00'17"
C9	552.90	333.74	179.08	338.74	S87°19'33"E	3°00'17"
C10	552.90	333.74	179.08	338.74	S87°19'33"E	3°00'17"
C11	552.90	333.74	179.08	338.74	S87°19'33"E	3°00'17"
C12	552.90	333.74	179.08	338.74	S87°19'33"E	3°00'17"
C13	552.90	333.74	179.08	338.74	S87°19'33"E	3°00'17"
C14	552.90	333.74	179.08	338.74	S87°19'33"E	3°00'17"
C15	552.90	333.74	179.08	338.74	S87°19'33"E	3°00'17"
C16	552.90	333.74	179.08	338.74	S87°19'33"E	3°00'17"
C17	552.90	333.74	179.08	338.74	S87°19'33"E	3°00'17"
C18	552.90	333.74	179.08	338.74	S87°19'33"E	3°00'17"
C19	552.90	333.74	179.08	338.74	S87°19'33"E	3°00'17"
C20	552.90	333.74	179.08	338.74	S87°19'33"E	3°00'17"

AREA IN LOTS=17.39 ACRES
 AREA IN COMMONS AREA=1.09 ACRES
 AREA IN ACTIVE GREEN SPACE=1.43 ACRES
 AREA IN PASSIVE GREEN SPACE=1.28 ACRES
 AREA IN R.O.W.=2.68 ACRES
 AREA IN SUBDIVISION=23.88 ACRES

Owner/Developer:
 Retail Place, LLC
 7700 Stonebridge Golf Drive
 Madisonville, TN 37051
 618-346-7878

Sherbut-Carson-Claxton, LLC
 #4 Meadow Heights Professional Park
 Collinsville, Illinois 62234
 Phone: 618-345-5454
 Fax: 618-345-3017

The area embraced on this plat is part of Madison County, Illinois Parcel No. 8:

DATE	REVISIONS
10-1-16-15-00-000-002	
10-1-16-15-00-000-002.002	
10-1-16-15-00-000-002.004	
10-1-16-15-00-000-002.005	

DATE	REVISIONS
MAY 21, 2019	REMARKS
6/27/18	ADD SWEC EASEMENT 05/04
8/15/19	FOR CITY COMMENTS
9/2/19	GREENSPACE AREAS

FINAL PLAT
FIRST ADDITION TO STONE CLIFF MANOR

PROJECT NO. 3013
 SHEET NUMBER: 1 of 2

MADISON COUNTY
 FAUST FREDERICK G
 Deed Book 2491, Page 344
 Deed Book 3895, Page 1408

MADISON COUNTY
 POB CORNER OF SECTION 15
 STONE CLIFF MANOR
 PC 65 PG 75

MADISON COUNTY
 POB CORNER OF SECTION 15
 STONE CLIFF MANOR
 PC 65 PG 75

Submitted by: *Cade Osborn (Will Call)*
 7700 Stonebridge Golf Dr.
 Madisonville, TN 37051

WHITE, CHESTER L
 Deed Book 2650, Page 631

WHITE, MARTY A
 Deed Book 3547
 Page 239